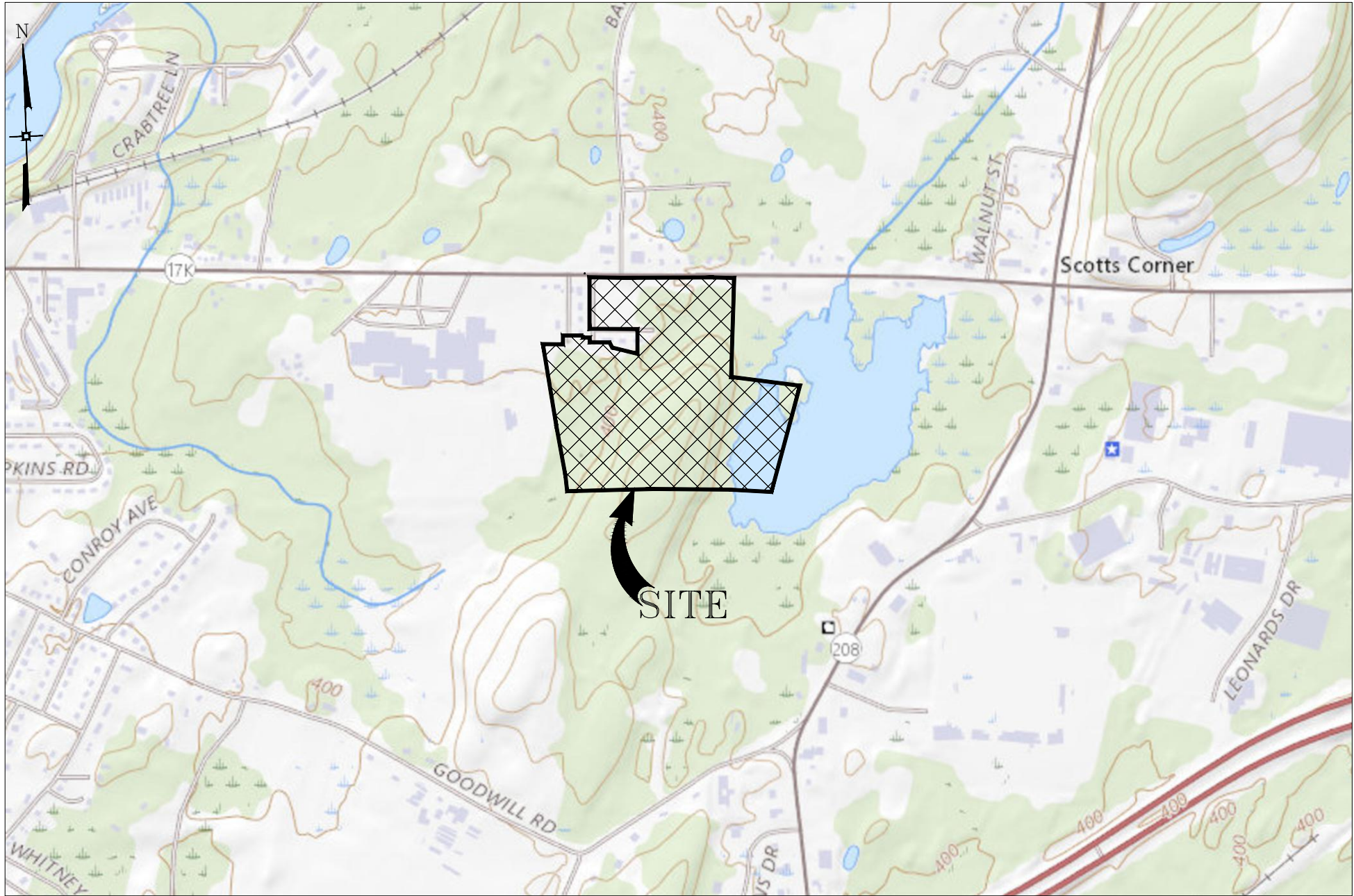


Drawing Name: Z:\103.0301 - Sheffield Apartments\EAF & EIS Figures\103.0301 - EIS Figures.dwg Date Printed: Jan 02, 2024, 10:57am



SOURCE: USGS TOPOGRAPHICAL BASEMAP

USGS MAP	SHEFFIELD APARTMENTS ROUTE 17K TOWN OF MONTGOMERY ORANGE COUNTY, NEW YORK	DATE: 12/15/2023	JOB # 103.0301	<b>ENGINEERING &amp; SURVEYING PROPERTIES</b> <small>Achieving Successful Results with Innovative Designs</small>	<b>MONTGOMERY OFFICE</b> 71 CLINTON STREET MONTGOMERY, NY 12549 Ph: (845) 457-7727 WWW.EP-PC.COM
		SCALE: 1"=1000'	SHEET # 2.2B		